

TFT

45t RSHD4531-A19LLIG2

REACH STACKER

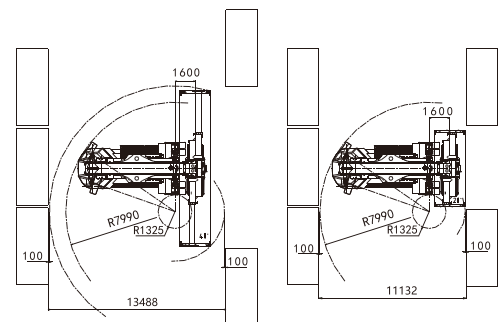
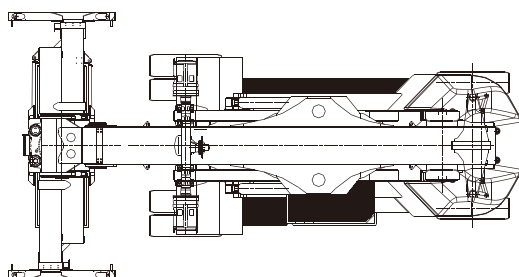
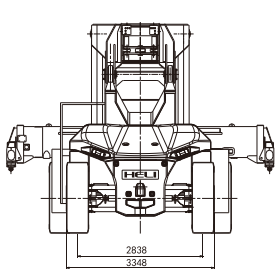
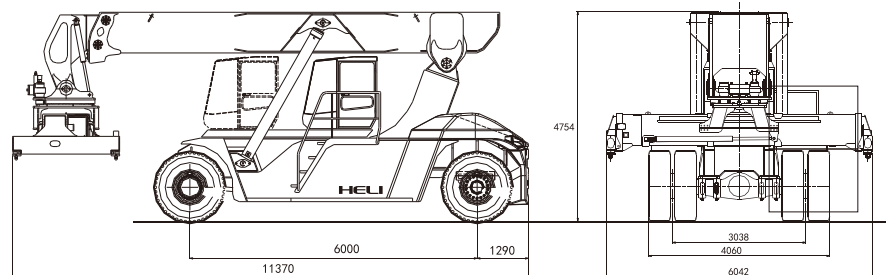
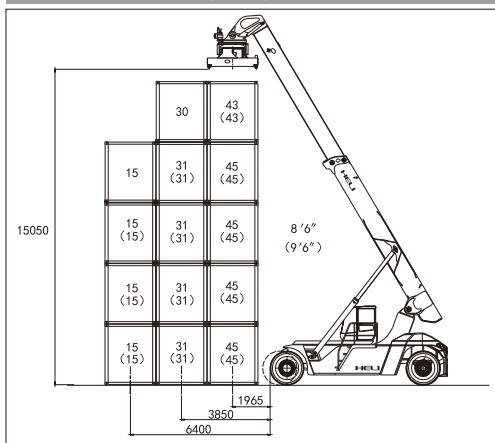


- Based on a mature platform, the truck doesn't need to make major changes to achieve "oil to electricity".
- Standardized battery pack design makes battery changing more convenient. And the battery pack has a built-in automatic fire extinguishing system.
- The traction adopts an electric direct drive system, which has the advantages of high efficiency, good smoothness, and high reliability.
- Double recovery of braking and telescopic luffing energy, combined with boom energy regeneration, effectively improves the service time.
- Using a high-speed ratio drive axle, the motor can output greater torque; excellent braking performance meets the requirements of long and high-frequency braking operations.
- New wide-view cab, full-suspension seats, and integrated console provide a comfortable driving experience.
- Digital display instrumentation performs real-time monitoring of vehicle status; the high-voltage electrical box comes with BMS inspection; the boom height and angle detection system improves driving stability

RSHD4531-A19LLIG2

Characteristics		TFT	
1.01	Model		RSHD4531-A19LLIG2
1.02	Rated capacity (the first/ second/third row)	kg	45000/31000/15000
1.03	Load center (the first/ second/third row)	mm	1965/3850/6400
1.04	Max.Lifting height(the first row)	mm	15050
Dimensions			
2.01	Overall length(with fork)	mm	11300
2.02	Overall width	mm	4148
2.03	Min.Boon height	mm	1145
2.04	Max.Boon tilting angles	°	60
2.05	Min.outside turning radius	mm	7790
2.06	Container spreader		EIME 817 INN
2.07	Side shift	mm	+800~-800
2.08	Rotation	mm	-105~+195
2.09	Battery voltage/rated capacity	V/Ah	618.24/684
2.10	Controls		Suzhou LVKON
2.11	Drive axle		Kessler

Loading Diagram



* Details of specifications and equipment are based on information available at time of printing and may change without notice.